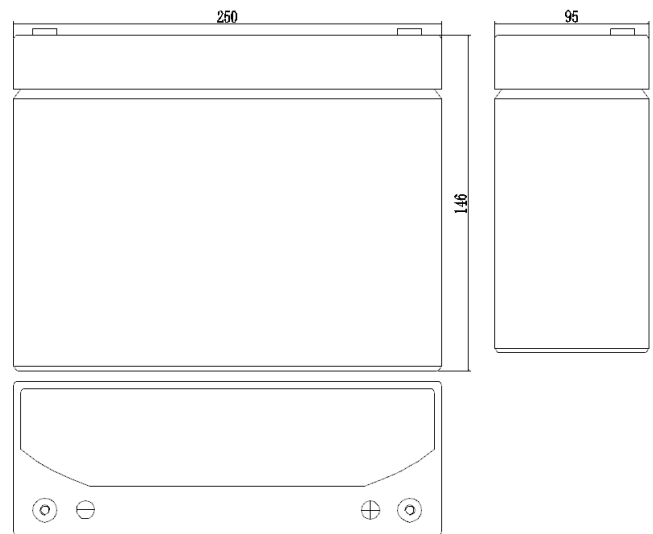


**Specifications**

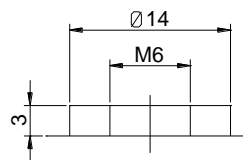
Nominal Voltage		12 V
Capacity (25°C)	20HR(10.5V)	29Ah
	10HR(10.8V)	26Ah
	1HR(9.60V)	18.9Ah
Dimension	Length	250 ± 2mm (9.34inch)
	Width	96 ± 2mm (3.78inch)
	Height	146 ± 2mm (5.75inch)
	Total Height	149 ± 2mm (5.87inch)
Approx. Weight		8.6kg (19.0lbs) ± 4%
Terminal type		T9
Internal resistance (Fully charged, 25°C)		Approx. 16.5mΩ
Capacity affected by temperature (20HR)	40°C	102%
	25°C	100%
	0°C	85%
	-15°C	65%
Self-discharge (25°C)	3 month	Remaining Capacity: 91%
	6 month	Remaining Capacity: 82%
	12 month	Remaining Capacity: 65%
Nominal operating temperature		25°C ± 3°C (77°F ± 5°F)
Operating temperature range	Discharge	-15°C ~ 50°C (5°F ~ 122°F)
	Charge	-10°C ~ 50°C (14°F ~ 122°F)
	Storage	-20°C ~ 50°C (-4°F ~ 122°F)
Float charging voltage(25°C)		13.60 to 13.80V Temperature compensation: -18mV/°C
Cyclic charging voltage(25°C)		14.50 to 14.90V Temperature compensation: -30mV/°C
Maximum charging current		7.8A
Terminal material		Copper
Maximum discharge current		360A(5 sec.)
Designed floating life(20°C)		10years



**Dimensions**



**Terminal**



Terminal T9

- ◆ Absorbent glass mat technology;
- ◆ Recognized by UL & CE;
- ◆ ABS container.

**Constant Current Discharge Characteristics (A, 25°C)**

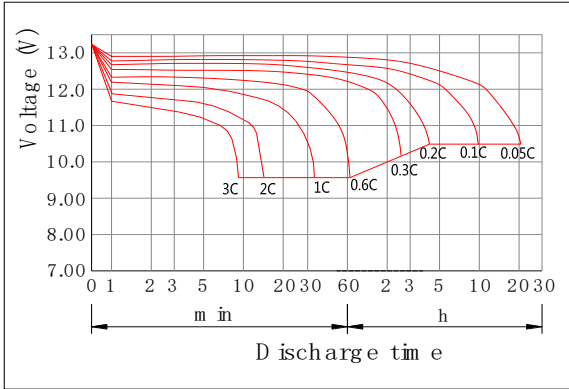
F.V/TIME	5min	10min	15min	30min	60min	2h	3h	4h	5h	6h	8h	10h	20h
9.60V	110	69.6	55.1	30.7	18.9	10.3	7.40	5.92	5.03	4.23	3.25	2.74	1.47
9.90V	107	67.5	53.8	30.1	18.6	10.2	7.35	5.88	5.00	4.21	3.23	2.72	1.47
10.2V	102	64.7	51.8	29.2	18.1	10.2	7.30	5.84	4.96	4.18	3.21	2.69	1.46
10.5V	98.1	61.9	50.0	28.5	17.7	10.0	7.25	5.80	4.93	4.15	3.19	2.64	1.45
10.8V	92.6	58.5	47.4	27.5	17.2	9.74	7.03	5.63	4.78	4.02	3.09	2.60	1.42

**Constant Power Discharge Characteristics (Watt, 25°C)**

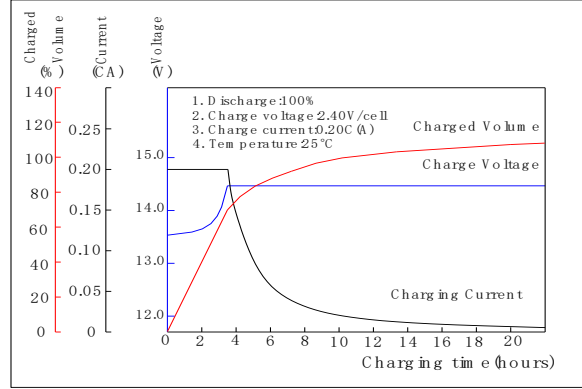
F.V/TIME	5min	10min	15min	30min	60min	2h	3h	4h	5h	6h	8h	10h	20h
9.60V	1230	785	628	352	218	121	87.9	70.5	60.0	50.8	39.0	32.8	17.7
9.90V	1193	762	613	345	215	120	87.3	70.0	59.7	50.5	38.8	32.7	17.6
10.2V	1144	730	590	335	210	119	86.7	69.6	59.3	50.1	38.5	32.6	17.5
10.5V	1095	699	570	327	205	117	86.1	69.1	58.9	49.8	38.3	32.4	17.4
10.8V	1033	659	540	314.6	199	114	83.5	67.0	57.1	48.3	37.1	31.7	17.1

Note: The above characteristics data can be obtained within three charge/discharge cycles.

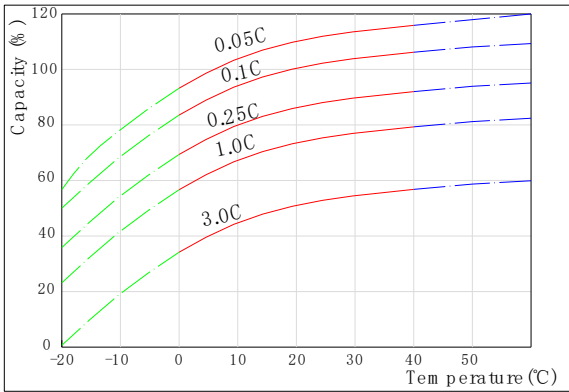
Discharge Characteristics(25°C)



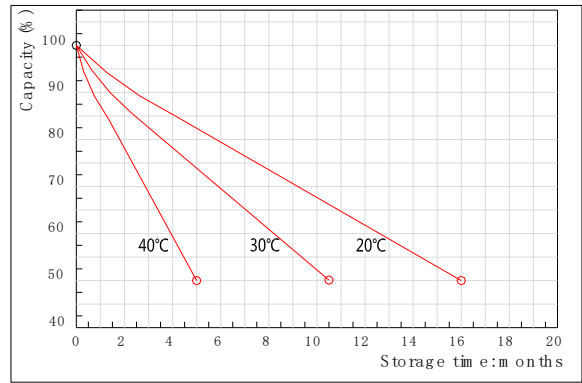
Charging Characteristics(25°C)



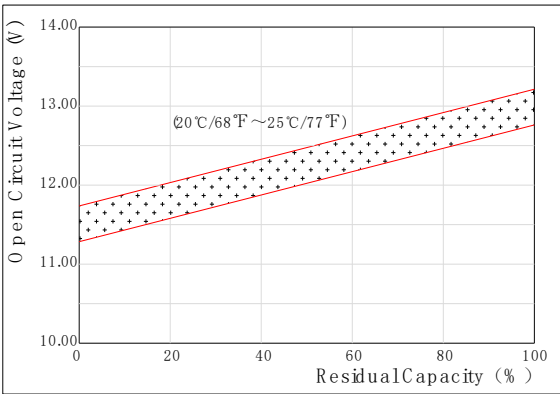
Effect of Temperature on Capacity



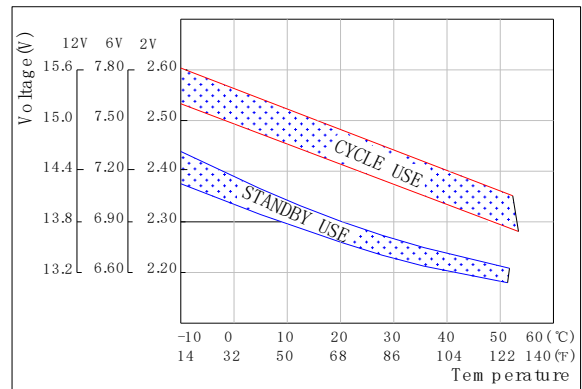
Self-discharge Characteristics



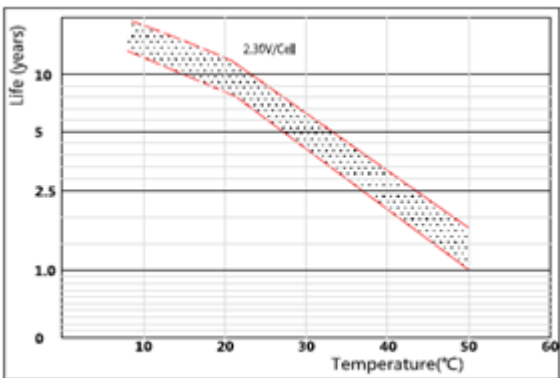
The Relationship for Open Circuit Voltage and Residual Capacity (25°C)



The Relationship for Charging Voltage and Temperature



Floating Life on Temperature



Cycle Life on D.O.D(25°C)

